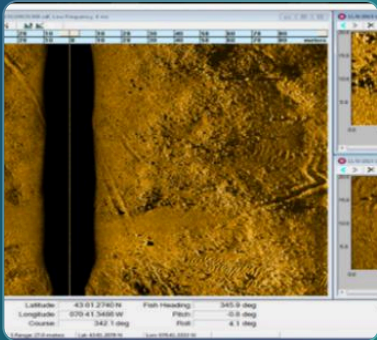


GEOPHYSICS · SUBSURFACE IMAGING

Geophysical Surveys







Non-invasive geophysical surveys for subsurface imaging — MASW, electrical resistivity tomography, seismic refraction, cross-hole and down-hole seismic, GPR — giving designers and investigators reliable data on stratigraphy, voids, cavities, and seismic parameters without deep drilling.



Since 2004 · MASW & ERT capable · KOC HSE compliant · ASTM & BS methods
Geophysics + geotechnics

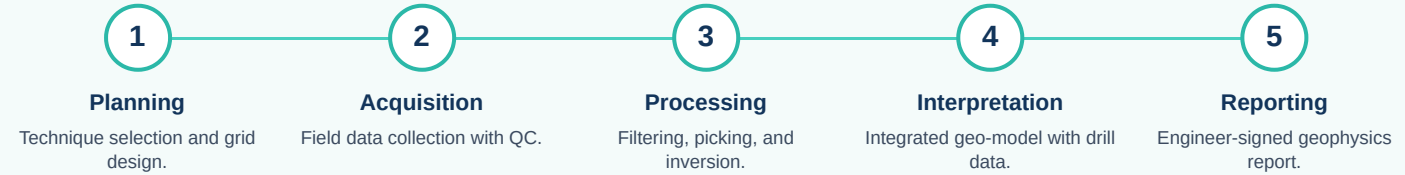
See the subsurface without drilling.

Vision International delivers integrated **geophysical surveys** that complement and reduce geotechnical drilling — providing continuous subsurface imaging for stratigraphy mapping, cavity and void detection, seismic site classification, liquefaction screening, and UXO clearance. Our geophysics team operates the full spectrum of techniques: **MASW, seismic refraction and reflection, electrical resistivity tomography (ERT), cross-hole and down-hole seismic, Ground Penetrating Radar (GPR), and marine magnetometer** — deployed onshore and offshore across Kuwait's oil & gas, infrastructure, and port projects.

 <p>MASW Multichannel Analysis of Surface Waves for shear-wave velocity profiles and seismic site classification (Vs30).</p>	 <p>Electrical Resistivity (ERT) 2D and 3D tomography for groundwater, contamination plumes, karst features, and soil layering.</p>	 <p>Seismic Refraction P-wave velocity profiles for rippability, bedrock depth, engineering rock-mass classification.</p>
 <p>Cross-hole & Down-hole Direct measurement of P- and S-wave velocities between and within boreholes for dynamic soil parameters.</p>	 <p>GPR Ground Penetrating Radar for utility detection, pavement investigation, reinforcement mapping, and forensic imaging.</p>	 <p>Magnetometer Marine and land magnetometer surveys for UXO clearance, buried metallic targets, and pipeline detection.</p>

HOW WE WORK

From Survey Plan to Subsurface Model



Full Geophysical Survey Offering

MASW & ERT

Seismic Refraction/Reflection

GPR Level II

KOC HSE Compliant

SEISMIC METHODS

- Multichannel Analysis of Surface Waves (MASW)
- ReMi (refraction microtremor)
- Seismic refraction tomography
- Seismic reflection profiling
- Cross-hole seismic testing
- Down-hole seismic testing
- Vs30 seismic site classification

ELECTRICAL & EM

- Electrical Resistivity Tomography (ERT) 2D/3D
- Vertical Electrical Sounding (VES)
- Wenner, Schlumberger, dipole-dipole arrays
- Induced Polarization (IP) surveys
- Electromagnetic (EM) profiling
- Self-potential (SP) surveys
- Conductivity mapping for salinity intrusion

GPR & RADAR

- Utility detection and mapping
- Pavement layer and void detection
- Concrete reinforcement scanning
- Forensic and archaeological GPR
- Tunnel and void investigation
- Karst and sinkhole detection
- High-frequency structural radar

MAGNETIC & INTEGRATED

- Land magnetometer surveys
- Marine magnetometer (UXO screening)
- Gradiometer buried-object detection
- Pipeline and cable tracking
- Integrated geo-geophysical modelling
- Borehole geophysics (P-S logging)
- 3D subsurface visualization

The Vision Difference — Why Clients Choose Us



Integrated Delivery

Field crews, senior engineers, and accredited ISO 17025 laboratory under one roof — no hand-off delays, no subcontractor gaps.



Engineer-Led Reports

Every deliverable is signed by a senior chartered engineer — findings interpreted for design, not delivered as raw data.



Schedule-Driven

Owned equipment, owned laboratory, owned teams. We hit tight oil & gas, MPW, KOC, and EPC schedules — every time.

Sectors We Serve

Oil & Gas

Infrastructure

Marine & Ports

Buildings & Towers

Industrial

Government

2004

ESTABLISHED

2000+

PROJECTS DELIVERED

4

ISO CERTIFICATIONS

Kuwait

& GCC COVERAGE



Vision International General Trading & Contracting Co. W.L.L.

Established 2004 · Kuwait-based · GCC delivery

OFFICE

Office 17, 1st Floor, South Tower
Al-Hashan Commercial Complex
Fahaheel, Kuwait
P.O. Box 46033, Fahaheel 46155

CONTACT · MANAGEMENT

+965 2372 4325
info@visionkuwait.com
www.visionkuwait.com

Eid N. H. Aladwani

General Manager
eid@visionkuwait.com